

MarketLine Databases

Market Data Analytics

User Guide

Publication Date: March 2017

WWW.MARKETLINE.COM

MARKETLINE. THIS PROFILE IS A LICENSED PRODUCT AND IS NOT TO BE PHOTOCOPIED

MarketLine

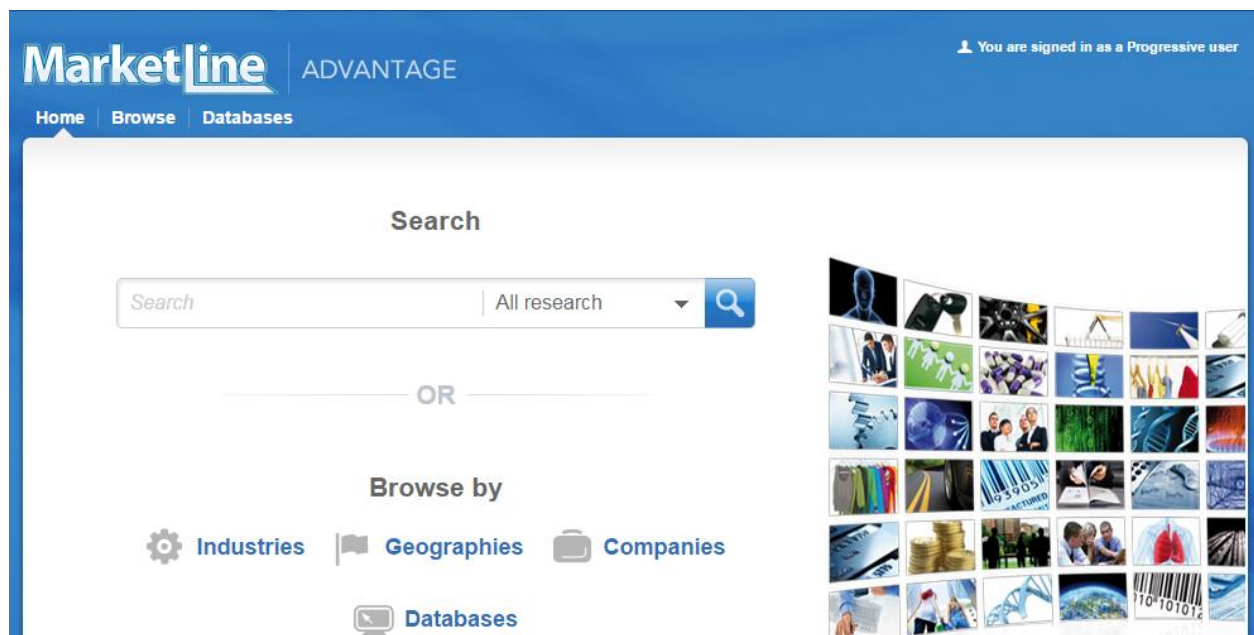
TABLE OF CONTENTS

1.	Market Data Analytics	3
1.1.	How to access	3
1.2.	Navigation between Dashboards	3
2.	Value Graphics.....	6
3.	Volume Graphics.....	7
4.	Per Capita	8
5.	Per Capita Growth.....	9
6.	Company Graphics	10
7.	Distribution Graphics.....	11
8.	Value Data by Category	12
9.	Value Growth Data by Country.....	13
10.	Per Capita Expenditure by Country.....	14
11.	Per Capita Expenditure by Category	15
12.	Per Capita Consumption by Country.....	16
13.	Per Capita Consumption by Category.....	17
14.	Company Value Data	18
15.	Company Volume Data	19
16.	Distribution Value Data	20
17.	Distribution Volume Data	21
18.	Methodology.....	22
19.	Contact Us	23

1. MARKET DATA ANALYTICS

1.1. How to access

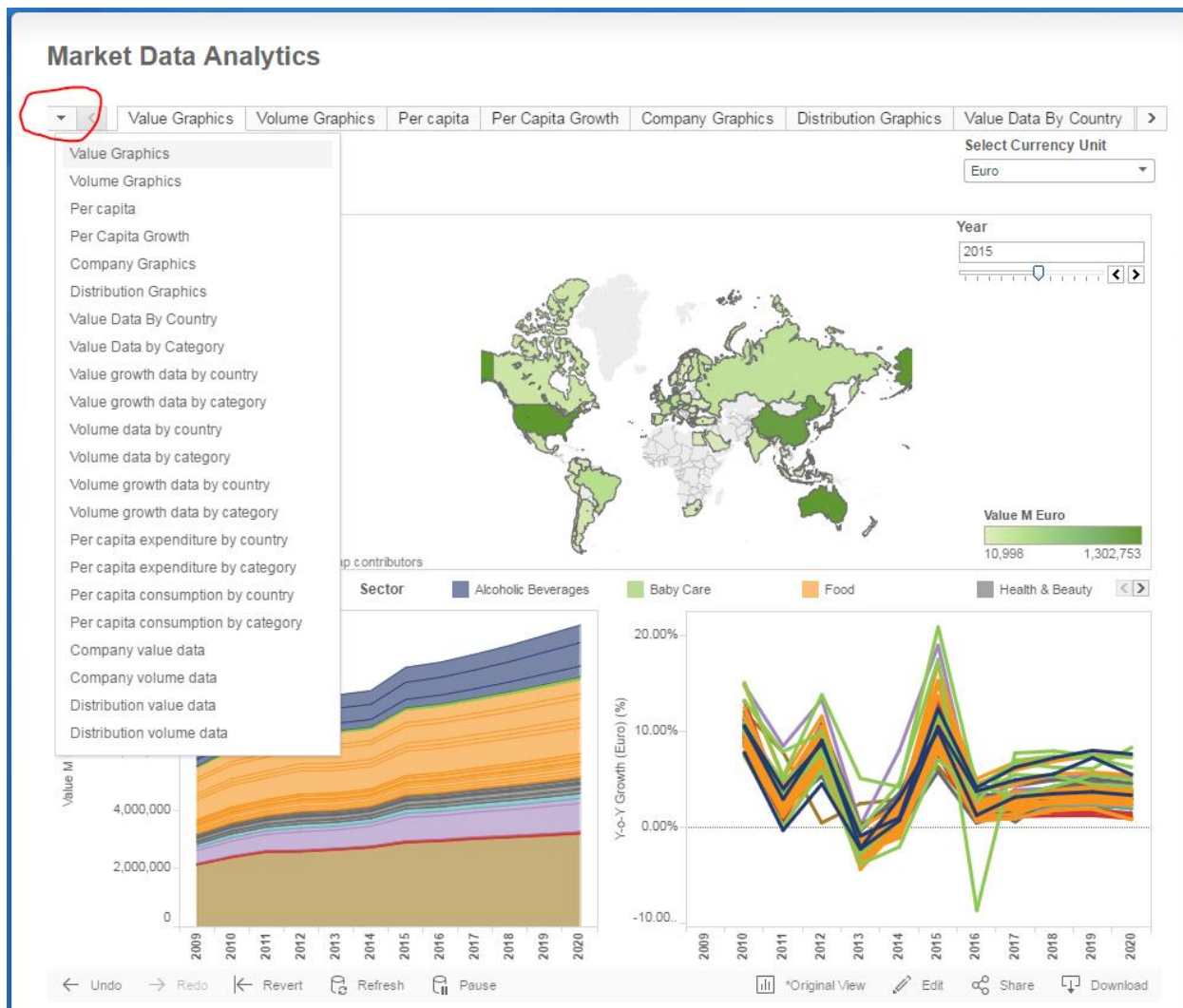
Market Data Analytics City Data can be accessed in the Databases section of the MarketLine Advantage homepage:



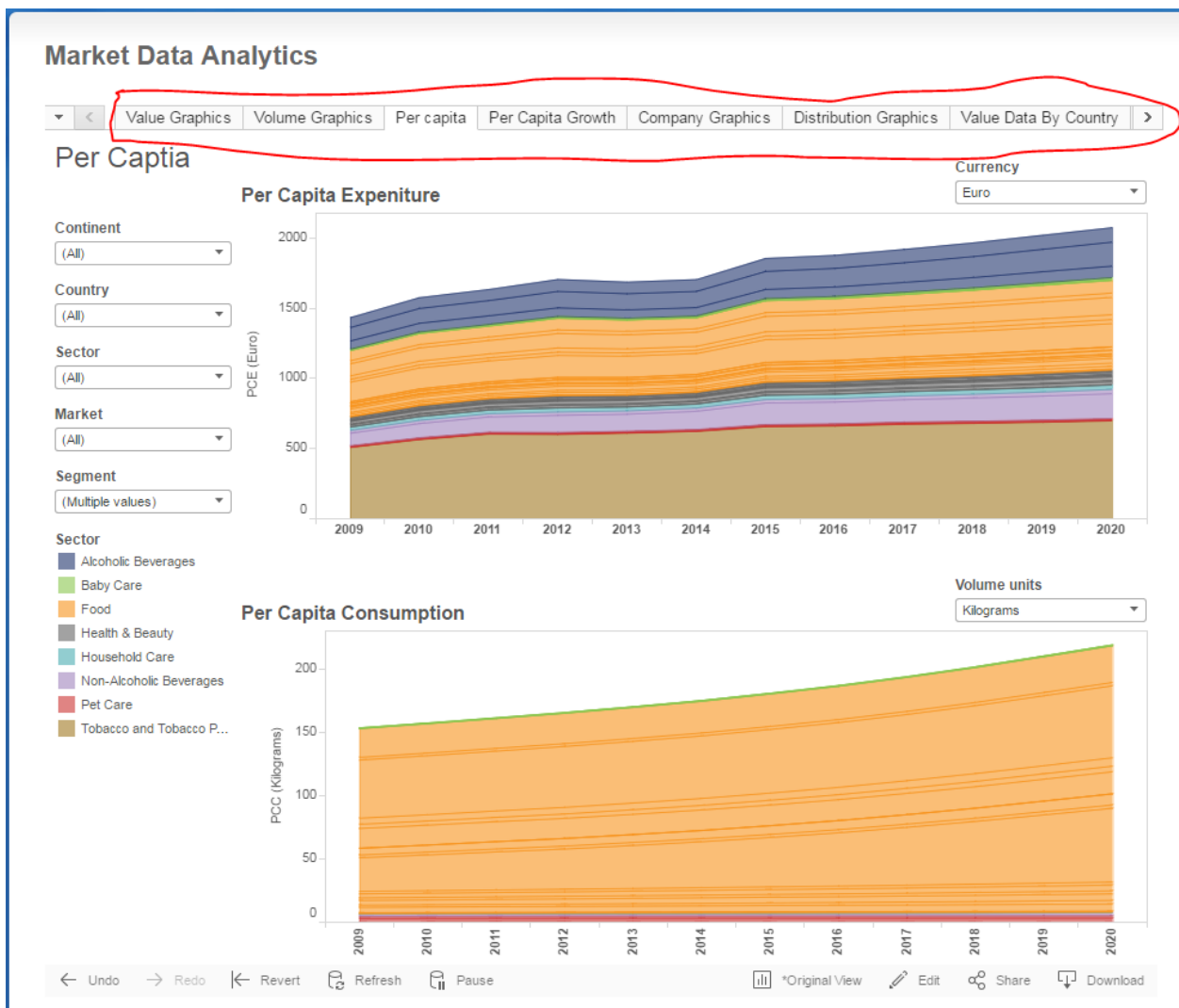
Once you're on the Databases section click "Market Data Analytics" to be automatically directed to the Market Data Analytics 'tool.

1.2. Navigation between Dashboards

The Market Data Analytics tool is divided into separate 'Dashboards'. Each Dashboard can be accessed by clicking the down arrow at the top left of the screen. This brings up a drop down menu listing each Dashboard:



Clicking the name of a Dashboard in the drop down will then take you to the relevant section. Alternatively the tool can be navigated by clicking the Dashboard tabs at the top of the screen:



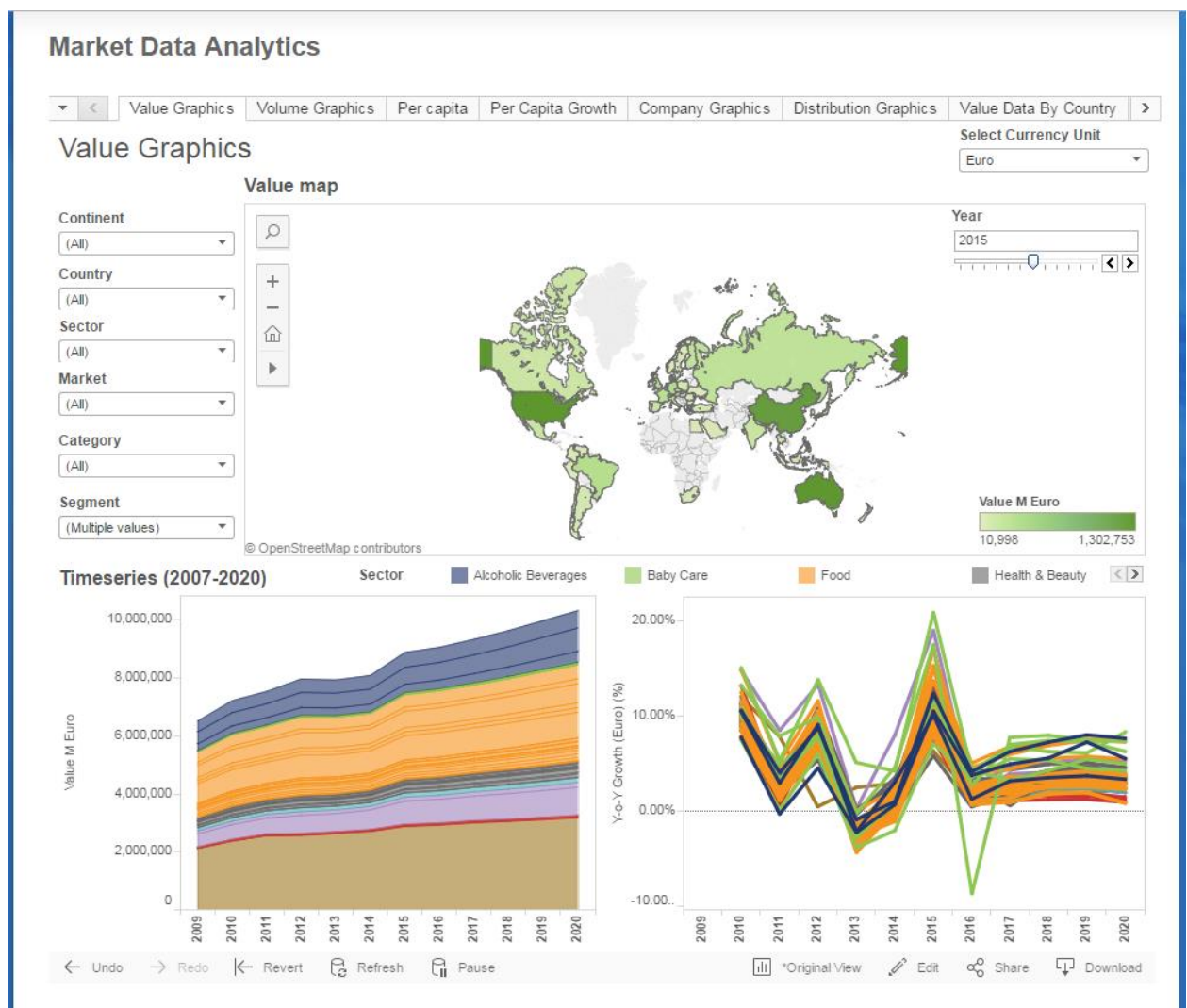
Additional features:

- If you hover over any data point with the cursor, this will show more information for that particular data value
- If you wish to download a map, chart or data point via Tableau Workbook, PDF, data cut or image, you will first need to click on the map, chart or data point which you wish to download, then select the **'Download'** button in the bottom right corner of the page and choose the format in which you would like the data to be downloaded.
- To undo your most recent action, click **'Undo'**
- To undo all of your actions, click **'Revert'**

2. VALUE GRAPHICS

The Value Graphics Dashboard enables the user to view graphically the value (in multiple currency units), of markets, categories, or segments. The Value Graphics Dashboard consists of the Value map (top central), and Time Series (both value and volume) charts (bottom).

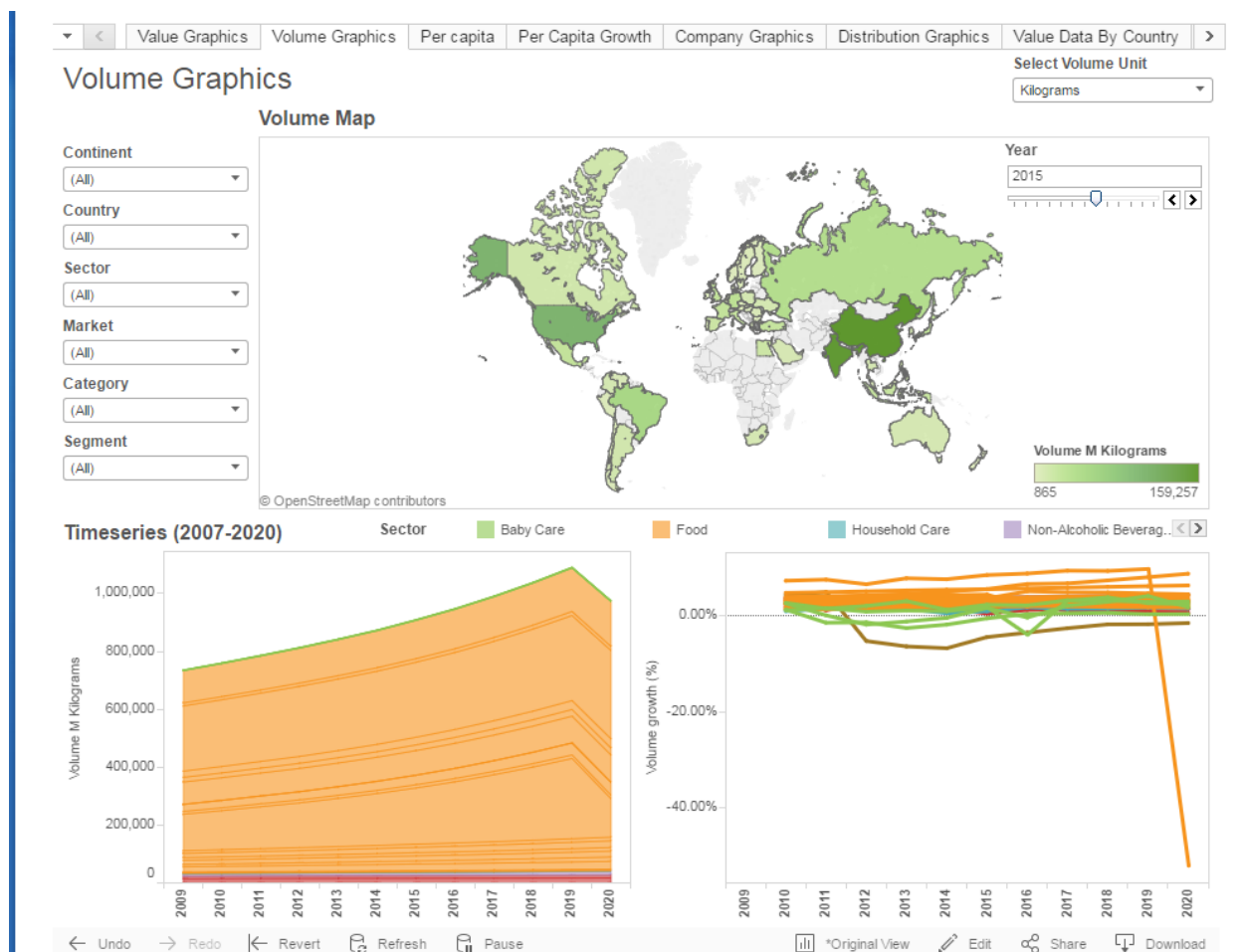
- *In order to quickly find data for your industry and/or geographical preference, you will find the filters 'Continent', 'Country', 'Sector', 'Market' and 'Segment' on the left hand side of the page. You can select single or multiple filters at any one time. When you have made your selection(s) click any white space outside of the drop down to hide the menu.*
- *The Currency Unit can be selected using the drop down box at the top right.*
- *There are also options in the Value map to change the Year displayed, zoom the map in or out, and search for countries. These options become available when hovering the mouse cursor over the map.*



3. VOLUME GRAPHICS

The Volume Graphics Dashboard enables the user to view graphically the volume (in multiple volume units), of markets, categories, or segments. The Volume Graphics Dashboard consists of the Volume map (top central), and Time Series (both value and volume) charts (bottom).

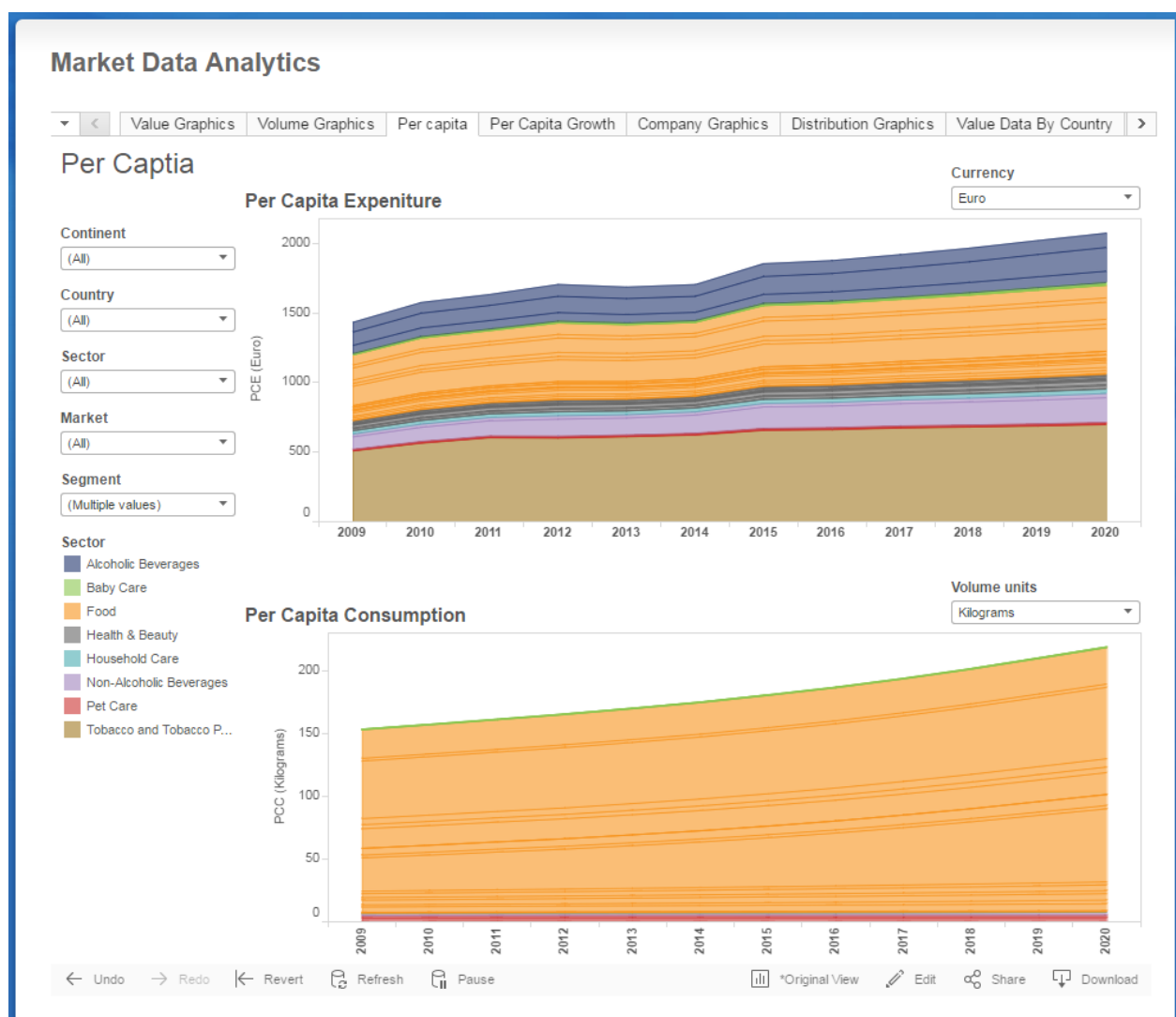
- *In order to quickly find data for your industry and/or geographical preference, you will find the filters 'Continent', 'Country', 'Sector', 'Market' and 'Segment' on the left hand side of the page. You can select single or multiple filters at any one time. When you have made your selection(s) click any white space outside of the drop down to hide the menu.*
- *The Volume Unit can be selected using the drop down box at the top right.*
- *There are also options in the Volume map to change the Year displayed, zoom the map in or out, and search for countries. These options become available when hovering the mouse cursor over the map.*



4. PER CAPITA

The Per Capita Dashboard enables the user to view graphically Per Capita Expenditure and Consumption of markets, categories, or segments.

- *In order to quickly find data for your industry and/or geographical preference, you will find the filters 'Continent', 'Country', 'Sector', 'Market' and 'Segment' on the left hand side of the page. You can select single or multiple filters at any one time. When you have made your selection(s) click any white space outside of the drop down to hide the menu.*
- *The Currency and Volume units can be selected using the drop down box on the right hand side of the charts.*
- *There is also an option to highlight a specific sector within a chart by clicking the sector name in the left hand pane.*



5. PER CAPITA GROWTH

The Per Capita Growth Dashboard enables the user to view graphically Per Capita Expenditure Growth, Per Capita Consumption Growth and Population Growth of sectors, markets, categories, or segments.

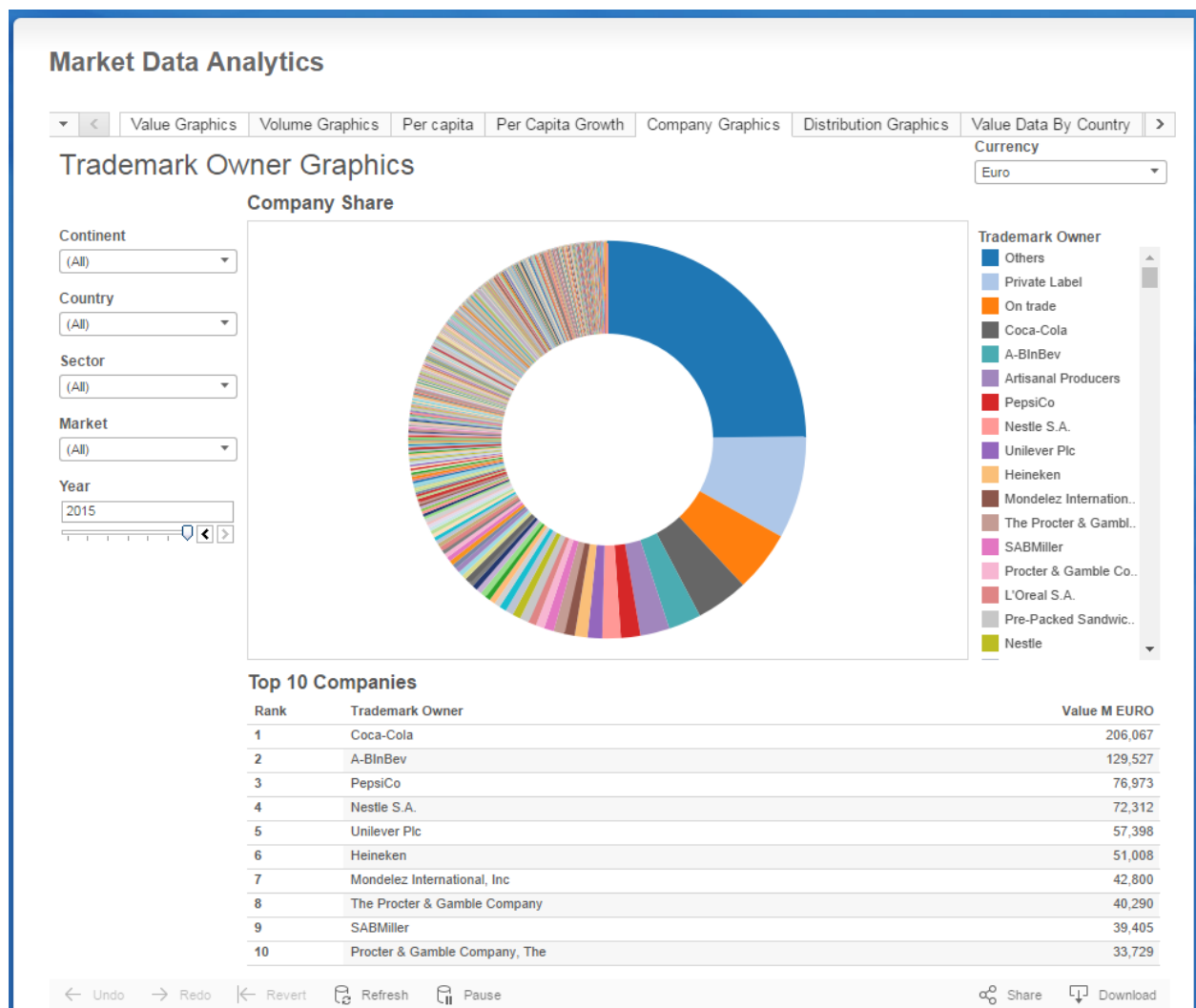
- *In order to quickly find data for your industry and/or geographical preference, you will find the filters 'Continent', 'Country', 'Sector', 'Market', 'Category', and 'Segment' on the left hand side of the page. You can select single or multiple filters at any one time. When you have made your selection(s) click any white space outside of the drop down to hide the menu.*
- *The Currency and Volume units can be selected using the drop down box on the right hand side of the charts.*



6. COMPANY GRAPHICS

The Company Graphics Dashboard enables the user to view graphically the market share of trademark owning companies for sectors, markets, categories, or segments.

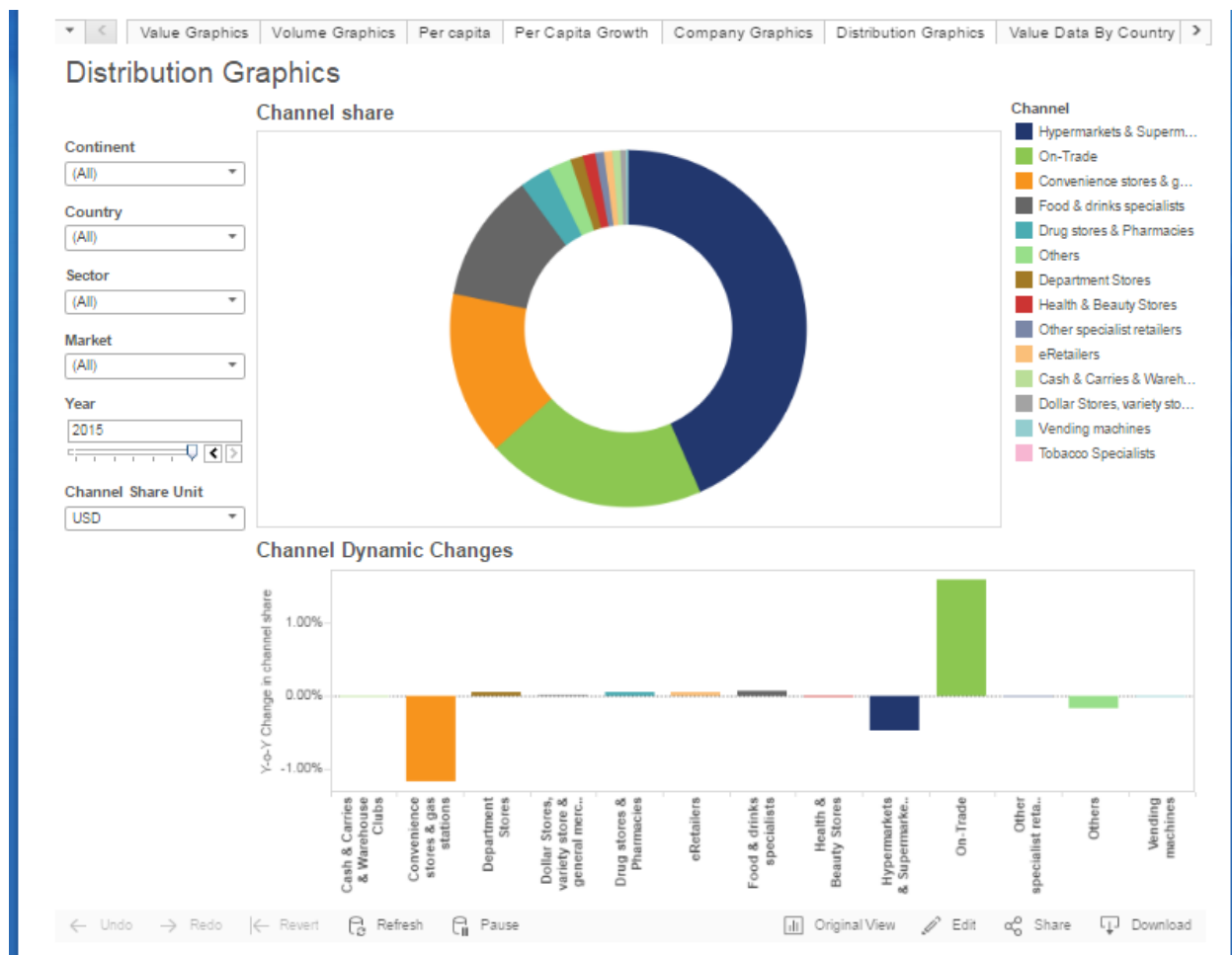
- *In order to quickly find data for your industry and/or geographical preference, you will find the filters 'Continent', 'Country', 'Sector', 'Market', and 'Year' on the left hand side of the page. You can select single or multiple filters at any one time. When you have made your selection(s) click any white space outside of the drop down to hide the menu.*
- *The Currency and Volume units can be selected using the drop down box on the right hand side of the charts.*



7. DISTRIBUTION GRAPHICS

The Distribution Graphics Dashboard enables the user to view graphically the share and dynamic changes of distribution channels for sectors, markets, categories, or segments.

- *In order to quickly find data for your market, segment, and/or geographical preference, you will find the filters 'Continent', 'Country', 'Sector', 'Market', and 'Year' on the left hand side of the page. You can select single or multiple filters at any one time. When you have made your selection(s) click any white space outside of the drop down to hide the menu.*
- *The channel share currency unit can be selected using the drop down box in the left hand pane.*



9. VALUE GROWTH DATA BY COUNTRY

The Value Growth Data by Country Dashboard enables the user to view value data in a tabular format for sectors, markets, categories, or segments.

- *In order to quickly find data for your market, segment, and/or geographical preference, you will find the filters 'Currency', 'Continent', 'Country', 'Sector', 'Market', 'Category' and 'Segment' at the top of the Dashboard. You can select single or multiple filters at any one time. When you have made your selection(s) click any white space outside of the drop down to hide the menu.*
- *The Growth measure can be toggled between Year-on-Year (Y-o-Y), and Five Year Compound Annual Growth Rate (CAGR). using the Growth measure dropdown menu at the top left.*

Capita Growth

Company Graphics

Distribution Graphics

Value Data By Country

Value Data by Category

Value growth data by country

Global market value growth data by country

Growth measure

Currency

Continent

Country

Sector

Market

Category

Segment

Y-o-Y Growth

Euro

(All)

(All)

Food

Bakery & Cere...

(All)

(All)

Global	Continent	Country	2010	2011	2012	2013	2014	2015	2016	2017	2018	2019	2020
Global	Africa	Egypt	6.76%	-6.76%	9.54%	-11.78%	0.54%	14.18%	0.51%	-0.36%	-0.39%	-0.36%	-1.07%
		South Africa	26.68%	0.32%	0.00%	-13.94%	-8.82%	8.11%	0.26%	3.77%	3.57%	3.52%	2.98%
Asia-Pacific		Australia	26.79%	10.26%	11.93%	-6.87%	-3.41%	3.39%	0.23%	2.60%	2.13%	1.58%	1.70%
		China	14.81%	8.67%	20.98%	8.06%	10.99%	30.64%	9.66%	9.64%	9.74%	9.93%	9.17%
		Hong Kong	8.14%	-1.65%	12.41%	0.29%	3.84%	24.04%	3.87%	3.01%	2.51%	2.42%	2.29%
		India	24.25%	4.88%	6.32%	-0.50%	8.54%	29.06%	8.18%	9.36%	9.35%	9.40%	9.01%
		Indonesia	28.70%	6.23%	8.98%	-6.19%	-4.47%	15.47%	-1.66%	6.27%	4.98%	5.63%	5.55%
		Japan	13.26%	6.22%	9.65%	-19.81%	-6.53%	6.00%	1.61%	3.35%	1.83%	2.14%	1.72%
		Malaysia	19.19%	4.24%	11.49%	-1.25%	0.37%	5.06%	-7.36%	5.08%	5.00%	5.01%	4.53%
		New Zealand	23.42%	6.61%	13.31%	0.08%	3.50%	3.02%	-4.49%	0.99%	0.71%	0.37%	0.42%
		Philippines	15.56%	3.50%	15.83%	0.57%	0.02%	22.27%	4.56%	4.18%	3.98%	4.14%	3.99%
		Singapore	18.90%	9.89%	16.01%	3.08%	5.55%	17.97%	5.65%	5.96%	5.38%	5.11%	5.19%
		South Korea	20.04%	3.06%	10.48%	3.42%	8.18%	16.04%	4.17%	4.06%	4.10%	4.00%	3.75%
		Thailand	16.95%	2.10%	9.55%	1.12%	-2.13%	17.73%	-5.16%	3.13%	2.97%	2.94%	2.39%
Europe		Austria	1.80%	1.88%	2.04%	2.19%	2.35%	2.52%	2.34%	2.34%	2.35%	2.35%	2.38%
		Belgium	1.62%	1.71%	1.97%	2.02%	2.06%	2.11%	2.12%	2.13%	2.14%	2.15%	2.16%
		Bulgaria	2.96%	3.00%	3.04%	3.08%	3.12%	3.16%	3.14%	3.09%	3.13%	3.11%	3.09%
		Czech Republic	6.38%	4.53%	-0.54%	-1.50%	-3.95%	3.12%	1.41%	0.93%	0.73%	0.74%	0.21%
		Denmark	2.70%	2.63%	3.22%	2.84%	3.31%	3.62%	2.43%	2.91%	2.64%	2.22%	2.27%
		Finland	1.77%	1.87%	1.98%	2.10%	2.22%	2.35%	2.19%	2.17%	2.16%	2.16%	2.18%
		France	1.11%	1.14%	1.19%	1.21%	1.25%	1.32%	1.30%	1.29%	1.30%	1.28%	1.29%
		Germany	1.63%	1.69%	1.78%	1.84%	1.91%	2.01%	1.85%	1.84%	1.84%	1.86%	1.86%
		Greece	1.69%	1.78%	1.88%	1.98%	2.07%	2.16%	2.20%	2.10%	2.21%	2.24%	2.16%
		Hungary	4.81%	1.31%	-0.54%	0.35%	-0.71%	3.62%	2.33%	2.35%	2.29%	1.69%	0.89%
		Italy	1.73%	1.77%	1.81%	1.85%	1.89%	1.94%	1.95%	1.96%	1.94%	1.99%	2.00%
		Netherlands	1.61%	1.67%	1.73%	1.82%	1.91%	1.98%	1.86%	1.82%	1.91%	1.94%	1.95%
		Norway	11.28%	4.86%	6.46%	-2.04%	-4.54%	-3.72%	-0.79%	1.07%	0.86%	0.52%	0.58%
		Poland	11.01%	-0.79%	0.75%	2.07%	2.67%	2.86%	3.17%	2.66%	2.56%	2.51%	2.23%
		Portugal	1.61%	1.68%	1.84%	2.17%	2.71%	2.38%	2.70%	2.73%	2.70%	2.75%	2.75%

Undo

Redo

Revert

Refresh

Pause

Original View

Edit

Share

Download

10. PER CAPITA EXPENDITURE BY COUNTRY

The Per Capita Expenditure by Country Dashboard enables the user to view per capita expenditure data in a tabular format for sectors, markets, categories, or segments.

- In order to quickly find data for your market, segment, and/or geographical preference, you will find the filters 'Continent', 'Country', 'Sector', 'Market', 'Category' and 'Segment' at the top of the Dashboard. You can select single or multiple filters at any one time. When you have made your selection(s) click any white space outside of the drop down to hide the menu.
- The Currency can be changed using the Currency dropdown menu at the top right.

Market Data Analytics

<

hy

Volume growth data by category

Per capita expenditure by country

Per capita expenditure by category

Per capita consumption by country

>

Per capita expenditure data by country

Continent		Country	Sector	Market	Category	Segment	Currency			
(All)		(All)	Food	Bakery & Cereals	(All)	(All)	Euro			
Global	Continent	Country	2009	2010	2011	2012	2013	2014	2015	2016
Global	Africa	Egypt	55.56	58.61	53.02	54.99	47.78	47.33	53.26	52.76
		South Africa	56.69	70.77	69.95	68.89	58.38	53.55	56.98	56.20
Asia-Pacific	Asia-Pacific	Australia	212.71	265.52	288.73	317.67	290.76	275.98	280.36	276.08
		China	9.63	11.00	11.90	14.32	15.40	17.00	22.10	24.10
		Hong Kong	63.78	68.47	66.89	74.32	74.20	76.47	94.26	97.32
		India	2.17	2.66	2.76	2.89	2.84	3.05	3.88	4.15
		Indonesia	9.93	12.61	13.23	14.23	13.17	12.43	14.17	13.78
		Japan	192.67	218.19	232.21	255.14	204.97	191.90	203.76	207.39
		Malaysia	21.34	25.03	25.67	28.18	27.41	27.11	28.07	25.64
		New Zealand	219.93	268.84	284.95	320.94	317.63	323.06	328.50	311.24
		Philippines	8.98	10.36	10.53	11.99	11.85	11.65	14.01	14.41
		Singapore	55.52	64.85	69.80	79.01	80.13	83.49	97.33	101.62
		South Korea	38.10	45.53	46.58	51.22	52.75	56.84	65.69	68.15
		Thailand	9.99	11.66	11.87	12.95	13.04	12.71	14.91	14.09
Europe	Europe	Austria	435.62	442.43	449.25	456.34	463.53	470.74	478.31	485.52
		Belgium	421.85	425.23	428.09	433.19	439.41	446.43	453.47	461.10
		Bulgaria	289.89	300.44	311.44	322.77	334.59	346.89	359.80	373.12
		Czech Republic	110.23	116.98	122.51	121.71	119.86	114.97	118.37	119.88
		Denmark	277.37	283.60	289.85	298.05	305.23	313.96	324.04	330.63
		Finland	318.67	322.83	327.36	332.27	337.69	343.65	350.17	356.28
		France	316.38	318.32	320.40	322.75	325.25	327.93	330.84	333.73
		Germany	219.77	223.48	231.29	234.83	238.43	241.71	246.11	249.96
		Greece	437.62	446.35	455.53	465.35	477.37	490.36	503.88	517.55
		Hungary	90.52	95.09	96.61	96.59	97.19	96.80	100.58	103.14
		Italy	301.35	305.61	310.49	315.26	317.39	317.59	322.88	328.05

11. PER CAPITA EXPENDITURE BY CATEGORY

The Per Capita Expenditure by Category Dashboard enables the user to view per capita expenditure data in a tabular format for sectors, markets, categories, or segments.

- In order to quickly find data for your market, segment, and/or geographical preference, you will find the filters 'Continent', 'Country', 'Sector', 'Market', 'Category' and , 'Segment' at the top of the Dashboard. You can select single or multiple filters at any one time. When you have made your selection(s) click any white space outside of the drop down to hide the menu.
- The Currency can be changed using the Currency dropdown menu at the top left.

<div> < > Volume growth data by category Per capita expenditure by country Per capita expenditure by category Per capita consumption by country </div>											
Per capita expenditure data by category											
Currency		Continent		Country		Sector		Market		Category	
Euro		(All)		(All)		Food		Bakery & Cereals		(All)	
Sector	Market	Category	Segment	2009	2010	2011	2012	2013	2014	2015	2016
Food	Bakery & Cereals	Baking Ingredients	Baking Chocolate Chip..	0.21	0.23	0.23	0.25	0.24	0.24	0.28	0.28
			Baking Powder/Soda	0.11	0.11	0.11	0.12	0.12	0.12	0.13	0.13
			Cake Decorations & Ici..	0.17	0.18	0.18	0.20	0.19	0.19	0.21	0.21
			Cocoa-Baking	0.08	0.08	0.08	0.09	0.08	0.08	0.09	0.09
			Corn & Potato Starch	0.08	0.09	0.09	0.09	0.09	0.09	0.09	0.09
			Desiccated Coconut	0.11	0.12	0.12	0.12	0.12	0.12	0.12	0.13
			Dry Yeast	0.07	0.07	0.07	0.08	0.07	0.07	0.08	0.08
			Fruit Pectins and Glaze..	0.07	0.08	0.08	0.08	0.08	0.07	0.08	0.08
			Non-Chocolate Baking ..	0.11	0.12	0.12	0.12	0.12	0.12	0.13	0.13
			Other Baking Ingredients	0.24	0.26	0.25	0.27	0.26	0.27	0.31	0.31
		Baking Mixes	Bread Mixes	0.12	0.13	0.13	0.14	0.14	0.13	0.15	0.15
			Brownie Mixes	0.22	0.24	0.24	0.26	0.26	0.26	0.30	0.30
			Cake Mixes	0.20	0.22	0.22	0.24	0.23	0.24	0.27	0.28
			Dessert Mixes	0.27	0.29	0.29	0.31	0.30	0.30	0.32	0.32
			Muffin Mixes	0.15	0.16	0.16	0.18	0.17	0.17	0.20	0.20
			Other Baking Mixes	0.14	0.15	0.15	0.16	0.15	0.15	0.17	0.17
			Pancake Mixes	0.19	0.20	0.20	0.22	0.21	0.21	0.24	0.25
			Rolls/Biscuit Mixes	0.12	0.13	0.13	0.14	0.14	0.14	0.15	0.15
		Bread & Rolls	Frozen Bread & Rolls	0.54	0.58	0.58	0.61	0.59	0.56	0.62	0.62
			Other Packaged/Industr..	14.40	15.57	15.56	16.36	15.53	14.87	15.57	15.47
			Unpackaged/Artisanal ..	15.21	16.53	16.40	17.06	16.38	15.69	16.16	15.93
		Breakfast Cereals	Hot Cereals	0.59	0.65	0.66	0.72	0.71	0.72	0.80	0.82
			Ready-to-Eat Cereals	3.16	3.43	3.42	3.67	3.59	3.62	4.03	4.08
		Cakes, Pastries & Sweet Pies	Packaged/Industrial Ca..	9.31	10.11	10.21	11.03	10.66	10.67	12.07	12.36
			Unpackaged/Artisanal ..	5.19	5.54	5.59	5.88	5.81	5.78	6.20	6.29
		Cereal Bars	Granola/Muesli/Yogurt ..	0.64	0.69	0.70	0.75	0.73	0.73	0.83	0.84

12. PER CAPITA CONSUMPTION BY COUNTRY

The Per Capita Consumption by Country Dashboard enables the user to view per capita consumption data in a tabular format for sectors, markets, categories, or segments.

- *In order to quickly find data for your market, segment, and/or geographical preference, you will find the filters, 'Continent', 'Country', 'Sector', 'Market', 'Category' and , 'Segment' at the top of the Dashboard. You can select single or multiple filters at any one time. When you have made your selection(s) click any white space outside of the drop down to hide the menu.*
- *The Volume measure can be selected using the Volume measure dropdown menu at the top left.*

<

y

Per capita expenditure by category

Per capita consumption by country

Per capita consumption by category

Company value data

Cor

Per capita consumption data by country

Volume

Continent

Country

Sector

Market

Category

Segment

Kilograms

(All)

(All)

Food

Bakery & Cereals

(All)

(All)

Global	Continent	Country	2009	2010	2011	2012	2013	2014	2015	2016	2017	2018	2019	2020
Global	Africa	Egypt	100.61	102.21	101.98	99.34	100.73	102.20	103.76	105.51	107.27	109.12	111.05	112.75
		South Africa	32.37	33.06	33.79	34.57	35.39	36.27	37.20	37.97	38.71	39.51	40.32	41.20
Asia-Pacific	Asia-Pacific	Australia	41.60	42.06	42.65	43.15	43.71	44.33	45.01	45.57	46.21	46.88	47.59	48.34
		China	2.83	2.99	3.16	3.34	3.55	3.77	4.01	4.26	4.53	4.81	5.09	5.37
		Hong Kong	11.01	11.21	11.43	11.61	11.88	12.13	12.41	12.71	13.03	13.31	13.59	13.95
		India	1.99	2.17	2.37	2.59	2.85	3.13	3.44	3.77	4.13	4.53	4.97	5.46
		Indonesia	4.51	4.80	5.12	5.47	5.86	6.29	6.78	7.31	7.92	8.59	9.33	10.16
		Japan	24.23	24.50	24.85	25.19	25.54	25.89	26.26	26.63	27.00	27.40	27.79	28.20
		Malaysia	9.26	9.42	9.59	9.78	9.99	10.21	10.45	10.69	10.93	11.18	11.45	11.73
		New Zealand	58.54	58.85	59.42	60.01	60.31	60.28	60.53	61.08	61.67	62.25	62.86	63.48
		Philippines	3.14	3.25	3.31	3.38	3.45	3.53	3.61	3.68	3.76	3.83	3.91	3.98
		Singapore	15.86	16.49	17.12	17.72	18.51	19.42	20.42	21.35	22.39	23.38	24.42	25.52
		South Korea	9.26	9.49	9.70	9.95	10.22	10.50	10.80	11.06	11.33	11.61	11.89	12.18
		Thailand	2.92	3.00	3.09	3.18	3.27	3.37	3.47	3.58	3.70	3.82	3.95	4.08
		Europe	Europe	Austria	101.68	102.38	103.01	103.58	104.06	104.42	104.73	105.08	105.48	105.93
Belgium	87.08			87.14	87.04	87.30	87.73	88.28	88.78	89.33	89.90	90.49	91.08	91.68
Bulgaria	93.75			95.93	98.15	100.39	102.68	105.02	107.43	109.79	112.16	114.65	117.17	119.71
Czech Republic	46.13			46.47	47.04	47.48	47.99	48.46	48.95	49.42	49.90	50.40	50.95	51.50
Denmark	48.95			49.96	51.04	52.22	53.46	54.77	56.19	57.45	58.79	60.14	61.50	62.89
Finland	51.51			52.11	52.76	53.45	54.20	55.02	55.92	56.70	57.47	58.23	59.02	59.83
France	77.35			77.67	78.01	78.41	78.84	79.31	79.83	80.24	80.65	81.06	81.50	81.93
Germany	75.36			75.87	77.73	78.12	78.51	78.78	79.39	79.78	80.20	80.70	81.26	81.88
Greece	98.30			99.75	101.25	102.83	104.82	106.95	109.13	111.12	113.20	115.37	117.66	119.92

13. PER CAPITA CONSUMPTION BY CATEGORY

The Per Capita Consumption by Category Dashboard enables the user to view per capita consumption data in a tabular format for sectors, markets, categories, or segments.

- In order to quickly find data for your market, segment, and/or geographical preference, you will find the filters, 'Continent', 'Country', 'Sector', 'Market', 'Category' and , 'Segment' at the top of the Dashboard. You can select single or multiple filters at any one time. When you have made your selection(s) click any white space outside of the drop down to hide the menu.
- The Volume measure can be selected using the Volume measure dropdown menu at the top left.

Market Data Analytics

<

Filter by category

Per capita consumption by country

Per capita consumption by category

Company value data

Company volume data

D

>

Per capita consumption data by category

Volume

Continent

Country

Sector

Market

Category

Segment

Kilograms

(All)

(All)

Food

Bakery & Cereals

(All)

(All)

Sector	Market	Category	Segment	2009	2010	2011	2012	2013	2014	2015	2016
Food	Bakery & Cereals	Baking Ingredients	Baking Chocolate Chi..	0.03	0.03	0.03	0.03	0.03	0.03	0.03	0.03
			Baking Powder/Soda	0.02	0.02	0.02	0.02	0.02	0.02	0.02	0.02
			Cake Decorations & I..	0.03	0.03	0.03	0.03	0.03	0.04	0.04	0.04
			Cocoa-Baking	0.01	0.01	0.01	0.01	0.01	0.01	0.01	0.01
			Corn & Potato Starch	0.01	0.01	0.01	0.01	0.02	0.02	0.02	0.02
			Desiccated Coconut	0.02	0.02	0.02	0.02	0.02	0.02	0.02	0.02
			Dry Yeast	0.01	0.01	0.01	0.01	0.01	0.01	0.01	0.01
			Fruit Pectins and Glaz..	0.01	0.01	0.01	0.01	0.01	0.01	0.01	0.01
			Non-Chocolate Bakin..	0.02	0.02	0.02	0.02	0.02	0.02	0.02	0.02
			Other Baking Ingredie..	0.05	0.05	0.05	0.05	0.05	0.05	0.05	0.05
		Baking Mixes	Bread Mixes	0.04	0.05	0.05	0.05	0.05	0.05	0.05	0.05
			Brownie Mixes	0.05	0.05	0.05	0.05	0.06	0.06	0.06	0.06
			Cake Mixes	0.04	0.04	0.05	0.05	0.05	0.05	0.05	0.05
			Dessert Mixes	0.06	0.06	0.06	0.06	0.06	0.06	0.07	0.07
			Muffin Mixes	0.03	0.03	0.03	0.03	0.03	0.03	0.03	0.03
			Other Baking Mixes	0.03	0.03	0.03	0.03	0.03	0.03	0.03	0.03
			Pancake Mixes	0.05	0.05	0.05	0.05	0.06	0.06	0.06	0.06
			Rolls/Biscuit Mixes	0.03	0.03	0.03	0.04	0.04	0.04	0.04	0.04
		Bread & Rolls	Frozen Bread & Rolls	0.15	0.15	0.15	0.15	0.15	0.16	0.16	0.16
			Other Packaged/Indu..	5.80	5.86	5.94	6.01	6.10	6.20	6.35	6.47

14. COMPANY VALUE DATA

The Company Value Data Dashboard enables the user to view company value data in a tabular format for sectors, markets, categories, or segments.


- *In order to quickly find data for your market, segment, and/or geographical preference, you will find the filters, 'Continent', 'Country', 'Sector', 'Market', 'Category' and , 'Segment' at the top of the Dashboard. You can select single or multiple filters at any one time. When you have made your selection(s) click any white space outside of the drop down to hide the menu.*
- *The Currency measure can be selected using the Volume measure dropdown menu at the top left.*

Market Data Analytics							
▼ < try Per capita consumption by category Company value data Company volume data Distribution value data Distribution volume data >							
Global market data company value							
Select Currency	Continent	Country	Sector	Market			
Euro ▼	(All) ▼	(All) ▼	(All) ▼	(All) ▼			
Trademark Owner	2009	2010	2011	2012	2013	2014	2015
Others	977,931.43	1,065,177.89	1,075,779.22	1,153,932.42	1,108,254.20	1,094,584.30	1,202,209.20
Private Label	303,347.22	328,733.93	335,848.48	359,243.65	359,441.03	367,669.50	404,198.25
On trade	178,482.77	198,216.15	204,221.61	221,642.30	218,328.56	218,779.60	240,683.75
Coca-Cola	122,268.49	139,838.01	151,907.88	168,267.55	166,937.53	179,630.34	206,066.91
A-BInBev	86,989.63	93,021.19	94,769.82	101,064.43	107,389.57	117,883.96	129,526.95
Artisanal Producers	99,397.25	107,672.03	108,452.00	114,387.65	111,354.95	108,896.82	115,566.56
PepsiCo	47,503.73	54,111.63	56,873.39	60,886.15	61,151.02	65,525.14	76,973.00
Nestle S.A.	51,750.81	58,037.65	60,082.93	65,618.00	64,921.22	65,573.00	72,312.18
Unilever Plc	40,440.58	45,536.85	48,332.58	52,316.08	51,865.37	52,216.89	57,397.89
Heineken	35,921.86	45,045.42	45,592.87	47,687.74	48,698.77	48,586.58	51,007.70
Mondelez International, Inc	1,218.71	1,333.56	1,714.87	38,197.77	38,281.30	38,846.88	42,800.00
The Procter & Gamble Company	27,960.28	30,782.82	31,670.15	34,739.22	34,791.93	35,665.14	40,289.56
SABMiller	29,078.87	31,241.00	31,250.13	38,717.31	36,964.40	36,760.44	39,404.62
Procter & Gamble Company, The	29,109.05	31,651.36	31,830.14	34,230.83	33,345.02	30,829.32	33,728.51

15. COMPANY VOLUME DATA

The Company Volume Data Dashboard enables the user to view company volume data in a tabular format for sectors, markets, categories, or segments.

- In order to quickly find data for your market, segment, and/or geographical preference, you will find the filters, 'Continent', 'Country', 'Sector', 'Market', 'Category' and , 'Segment' at the top of the Dashboard. You can select single or multiple filters at any one time. When you have made your selection(s) click any white space outside of the drop down to hide the menu.
- The Volume measure can be selected using the Volume measure dropdown menu at the top left.

Market Data Analytics							
▼	<	try	Per capita consumption by category	Company value data	Company volume data	Distribution value data	Distribution volume data >
Company volume data							
Select Volume Unit	Continent	Country	Sector	Market			
Litres ▼	(All) ▼	(All) ▼	(All) ▼	(All) ▼			
Trademark Owner	2009	2010	2011	2012	2013	2014	2015 
Others	148,577.99	139,698.64	144,717.40	150,141.03	136,058.22	121,888.47	122,554.44 ▲
Coca-Cola	74,694.88	77,187.72	80,735.86	83,762.92	84,970.32	86,593.98	87,783.98
A-BInBev	37,279.62	36,335.22	36,431.97	36,562.75	40,103.72	42,108.39	42,365.73
PepsiCo	27,747.16	31,809.26	33,117.67	31,318.02	31,547.35	32,223.35	31,779.66
Danone Group	18,166.45	19,633.08	21,323.86	22,619.10	25,113.15	26,934.08	28,394.21
Nestle	29,053.33	31,962.19	33,421.89	34,834.13	19,509.33	20,037.05	21,228.15
China Resources Enterprises	10,459.41	11,652.00	13,086.22	14,617.20	16,564.89	18,332.19	19,880.05
SABMiller	14,915.72	14,481.59	14,617.45	15,461.86	15,274.05	15,465.54	15,581.46
Heineken	10,988.03	14,619.63	14,821.73	14,983.60	15,109.12	15,015.67	15,161.72
Tingyi Holding Corp	9,750.81	13,257.32	14,013.00	13,414.15	1.06	0.74	14,150.91
Carlsberg Group	9,508.69	9,384.43	9,316.00	9,426.23	9,076.89	11,401.83	11,361.20
Dr Pepper Snapple Group	10,766.96	11,247.62	11,194.53	11,079.64	11,115.11	11,215.03	11,265.70
Hangzhou Wahaha Group Co., Ltd	6,612.79	6,564.08	12,681.48	12,456.96	12,773.50	11,796.83	10,161.66
Tsingtao	6,143.04	6,600.54	7,211.66	7,947.20	8,734.66	9,190.56	9,452.36
Suntory Holdings	4,359.33	6,594.32	6,723.34	6,985.52	7,436.49	8,103.88	8,433.10
Kirin Group	4,229.76	4,958.35	4,739.18	6,931.02	6,910.21	6,766.84	6,930.63

16. DISTRIBUTION VALUE DATA

The Distribution Value Data Dashboard enables the user to view distribution channel value data in a tabular format for sectors, markets, categories, or segments.

- *In order to quickly find data for your market, segment, and/or geographical preference, you will find the filters, 'Continent', 'Country', 'Sector', 'Market', 'Category' and , 'Segment' at the top of the Dashboard. You can select single or multiple filters at any one time. When you have made your selection(s) click any white space outside of the drop down to hide the menu.*
- *The Channel Share unit can be selected using the Channel Share Unit dropdown menu at the top left.*

Market Data Analytics							
▼ < try Per capita consumption by category Company value data Company volume data Distribution value data Distribution volume data >							
Distribution value data							
Channel Share Unit	Country	Continent	Sector	Market			
USD ▼	(All) ▼	(All) ▼	(All) ▼	(All) ▼			
Channel	2009	2010	2011	2012	2013	2014	2015
Cash & Carries & Warehouse Clubs	40,178.19	40,952.32	43,782.70	43,028.35	44,259.31	44,728.96	40,395.11
Convenience stores & gas stations	782,483.42	840,816.88	917,625.08	933,152.10	957,877.31	976,808.42	825,811.11
Department Stores	53,502.87	56,871.00	62,284.31	64,234.48	65,234.59	66,938.64	63,833.11
Dollar Stores, variety store & general merchandise retailers	25,095.38	26,894.77	29,104.60	29,313.51	30,190.05	30,883.30	28,364.11
Drug stores & Pharmacies	146,819.03	154,578.43	167,175.50	167,520.34	169,058.81	170,731.54	158,489.11
eRetailers	33,213.75	35,808.25	38,928.52	39,867.34	42,226.11	43,895.58	42,161.11
Food & drinks specialists	632,828.51	661,917.22	708,880.47	704,139.15	712,733.70	708,879.08	650,599.11
Health & Beauty Stores	59,114.75	61,976.97	67,412.07	67,359.55	68,273.16	68,991.45	63,074.11
Hypermarkets & Supermarkets	2,293,998.58	2,411,885.90	2,602,501.57	2,607,889.80	2,645,701.34	2,680,308.21	2,418,884.11

17. DISTRIBUTION VOLUME DATA

The Distribution Volume Data Dashboard enables the user to view distribution channel volume data in a tabular format for sectors, markets, categories, or segments. Currently this is only available for beverages and tobacco.

- *In order to quickly find data for your market, segment, and/or geographical preference, you will find the filters, 'Continent', 'Country', 'Sector', and 'Market' at the top of the Dashboard. You can select single or multiple filters at any one time. When you have made your selection(s) click any white space outside of the drop down to hide the menu.*
- *The Volume Unit can be selected using the Volume Unit dropdown menu at the top left.*

Market Data Analytics							
▼ < try Per capita consumption by category Company value data Company volume data Distribution value data Distribution volume data >							
Distribution volume data by category (beverages and tobacco only)							
Volume Units	Continent	Country	Sector	Market			
Litres	(All)	(All)	(All)	(All)			
Channel	2009	2010	2011	2012	2013	2014	2015
Cash & Carries & Warehouse Clubs	302.62	326.95	355.14	389.24	429.49	477.85	527.22
Convenience stores & gas stations	153,910.72	161,699.97	167,147.43	173,597.99	176,710.82	179,931.03	179,580.04
Department Stores	250.27	252.30	255.22	256.17	257.39	260.43	264.28
Dollar Stores, variety store & general merchandise retailers	15.82	15.87	15.95	16.01	16.08	16.15	16.23
Drug stores & Pharmacies	10.67	10.68	10.68	10.68	10.73	10.73	10.74
eRetailers	622.41	659.12	701.29	746.38	796.76	855.57	925.85
Food & drinks specialists	23,003.43	23,483.57	23,983.90	24,354.86	24,840.31	25,354.28	26,004.98

18. METHODOLOGY

A full methodology document is available online at http://marketline.com/wp-content/uploads/MDA-Methodology_ML_Tableau.pptx

19. CONTACT US

If you have any questions regarding our research or would like more information on our service offering please contact us.

Email:

reachus@marketline.com

Phone:

UK +44 (0) 207 936 6991

US +1 646 625 7389

AP +61 (0)3 8842 2478